

BLIZZARD SKIS

PRODUCT
CATALOG
UNITED STATES



TWENTY
22 | 23

22/23 COLLECTION

 **BLIZZARD**

Try to keep up ;)





HUSTLE



HERE FOR THE HUSTLE



HUSTLE IS ...

DAWN PATROL TO LAST CALL ...
COLD STARTS ... WHISKEY AND WINE ...
BELL TO BELL ... APRES APPROVED ... T TO B'S ...
FIRST AND LAST LIGHT ... HEADLAMP LAPS ... POCKET
BACON ... WORK HARD PLAY HARDER ... THE FROTH ...
FOOT POWERED ... FIRST TRACKS ... THE DARKHORSE ...

NOT EVERY SKIER HUSTLES -

Some prefer late starts and long lift rides, and that will always be alright with us. But for all you skiers who are Here For The Hustle—those of you who work late, rise early, climb hard, rip turns, and always pack a headlamp—there's a new ski collection in town that honors your every move. We even named it after you: Hustle.

You might think of the Hustle collection as a combination of Blizzard's lightweight Zero Gs and ripping Rustlers. But when you hit the skin track—and definitely, when you drop in—you'll find Hustle is unlike anything else in the world. Light on the uphill and incredibly stable on the downhill with our proven TrueBlend Free Woodcore and Carbon D.R.T. support, Hustle makes no compromises at any point of your ski experience. Because you, dear skier, *deserve gear that hustles as hard as you.*



HUSTLE



HUSTLE 11
8A226500001

Lengths: 164, 172, 180, 188, 192 cm
Sidecut: 139-112-129 mm (180)
 142-114-132 mm (188)
 145-116-135 mm (192)
Radius: 16, 17.5, 19, 21, 23 m
Rocker: Tip-Tail Rocker
Weight: 3700 g/pr @ 188
Construction: Sandwich Compound
 Sidewall, Carbon D.R.T., TrueBlend Free
 Woodcore



HUSTLE 10
8A226600001

Lengths: 156, 164, 172, 180, 188 cm
Sidecut: 133-102-122.5 mm (180)
 135-104-124 mm (188)
Radius: 14.5, 16, 17.5, 19 m
Rocker: Tip-Tail Rocker
Weight: 3560 g/pr @ 180
Construction: Sandwich Compound
 Sidewall, Carbon D.R.T., TrueBlend Free
 Woodcore



HUSTLE 9
8A226700001

Lengths: 157, 164, 172, 180, 188 cm
Sidecut: 127.5-94-117 mm (188 cm)
Radius: 14, 15.5, 17, 18.5 m
Rocker: Tip-Tail Rocker
Weight: 3400 g/pr @ 180
Construction: Sandwich Compound
 Sidewall, Carbon D.R.T., TrueBlend Free
 Woodcore

Hustle Skins Kohla



Hustle will have it's own dedicated line of skins from Kohla, pre-cut to the size and width of each individual model.

SKIN BACKCOUNTRY 11
8B211300001
SIZES: 164, 172, 180, 188, 192 cm

SKIN BACKCOUNTRY 10
8B211400001
SIZES: 156, 164, 172, 180, 188 cm

SKIN BACKCOUNTRY 9
8B211500001
SIZES: 157, 164, 172, 180, 188 cm

HUSTLE TECH



TrueBlend Free

Specifically designed to optimize the flex of the ski, **TrueBlend Free Woodcores** blend three different densities of wood to provide a well balanced and intuitive on-snow feel.

Like previous iterations, the TrueBlend Free woodcores use Beech and Poplar concentrated underfoot for added strength where you want it. The addition of a third type of wood, Paulownia, cuts weight and results in a ski that is as powerful as it is playful.



Carbon D.R.T

D.R.T. stands for **Dynamic Release Technology** which increases the strength and stability of the ski without compromising on weight or maneuverability.

The unique shape and construction of the D.R.T. in Hustle combines carbon fiber and fiberglass. The result is stability underfoot to maximize edgehold and performance in variable conditions. In addition, D.R.T. leaves the tips and tails more nimble and forgiving for effortless turn engagement. Performance you can feel, in a light-weight package.



A BASE TREATMENT THAT **POPS**

We built this ski with a specific type of skier in mind, and a good understanding that they need a ski that looks as good flying through the air as it does floating through pow.



**SPECIFICALLY
DESIGNED.**

INSIDE AND **OUT.**



A TOP SHEET THAT **SHINES**

We know that looks aren't everything, but when you have something that skis as well as Hustle does, we also know that it better dress the part. Featuring a shiny top sheet with matte accents and a transparent window to reveal the tech inside, Hustle doesn't just walk the walk—it also talks the talk.





ZERO G LT 80
8A228400001

Lengths: 150, 157, 164, 171, 178 cm
Sidecut: 108-80-94 mm (171 cm)
Radius: 18, 19, 20, 21, 22 m
Rocker: Tip-Tail Rocker
Weight: 980g (171cm)
Construction: Sandwich
Compound Sidewall (Carbon)
Carbon Drive LT, TrueBlend Tour
Woodcore

ZERO G LT 80
8A226900001

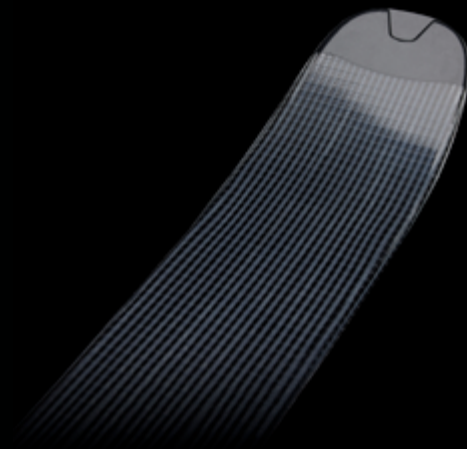
Lengths: 150, 157, 164, 171, 178 cm
Sidecut: 108-80-94 mm (171 cm)
Radius: 18, 19, 20, 21, 22 m
Rocker: Tip-Tail Rocker
Weight: 950g (164cm)
Construction: Sandwich Compound
Sidewall (Carbon) Carbon Drive LT,
TrueBlend Tour Woodcore



ZERO G



ZERO G LT 80



CARBON DRIVE L.T.

A unidirectional carbon fiber chassis that offers perfect torsional strength and forgiving flex for downhill performance.

The result: a ski that is not too stiff or strong, but reliable in all touring conditions.

A SKI THAT PUNCHES ABOVE IT'S WEIGHT

980g @ 171cm



CARBON REINFORCEMENTS

The binding mounting points are reinforced with edge-to-edge carbon fiber inserts. This provides unprecedented support and edge grip for maximum stability and confidence, and generates optimal power transmission, while also improving binding retention and safety.





TRUEBLEND

WOODCORE

TrueBlend Tour Woodcore

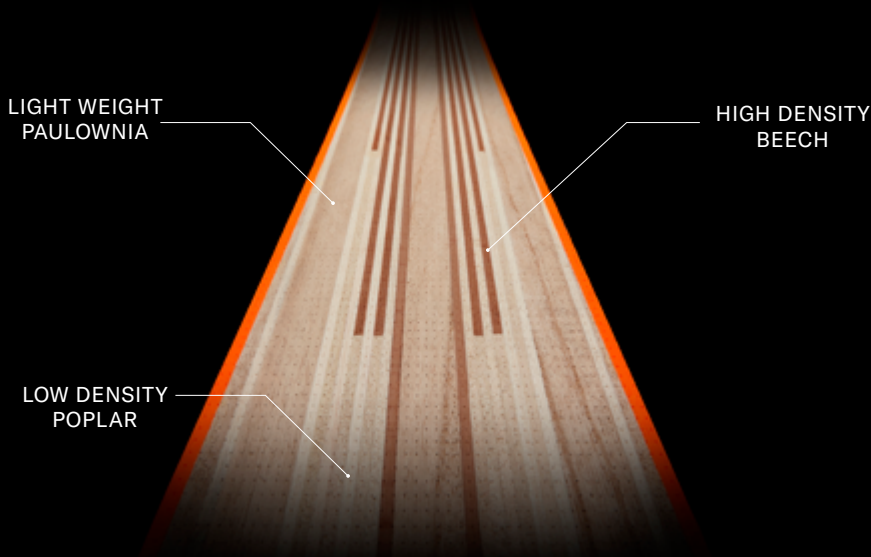
Engineered specifically with the world's most exposed and challenging lines in mind, our **TrueBlend Tour Woodcore** is specifically designed to be ultra lightweight and nimble without compromising on stability.

TrueBlend Tour woodcores blend Poplar for strength and Paulownia to shave weight. Poplar bands are concentrated underfoot and towards the tail to provide a stout, stable platform, then taper towards the tip. The result is a ski that is strong when and where it needs to be yet forgiving and nimble when things get dicey.



THE NEXT EVOLUTION OF TRUEBLEND

NEW FOR 2022-23, TRUEBLEND WOODCORES REDEFINE WHAT IS POSSIBLE IN THE BACKCOUNTRY

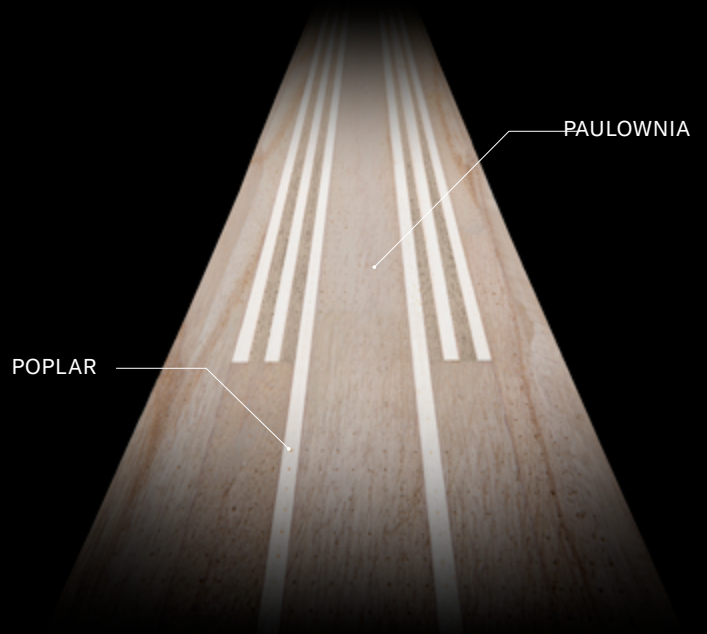


TRUEBLEND FREE HUSTLE

True Hustlers demand a very specific ski. They require a ski that lets them bust ass up the skintrack for hours on end, all while leaving plenty of gas in the tank to point and shoot when the time comes. It was with these Hustlers in mind that we designed our TrueBlend Free woodcore, which blends 3 different densities of wood to create a ski that is both powerful and lightweight. TrueBlend Free woodcores pack the platform and performance of a freeride ski into a lightweight, backcountry-ready package, so true Hustlers can finally have their cake, and eat it too.

TRUEBLEND TOUR ZERO G LT 80

It's an assumed trait in the ski mountaineering world that, in order for a ski to be truly lightweight, sacrifices must be made in terms of their performance. We've never cared much for that assumption, which is why we set out to create a truly lightweight touring ski that can still hold it's own when faced with the world's most far out and exposed lines. That ski? The Zero G LT 80, powered by the all-new TrueBlend Tour woodcore. Featuring bands of dense Poplar underfoot and towards the tail blended with lightweight Paulownia, TrueBlend Tour woodcores provide the stable platform necessary for hop-turning your way down a first descent and are light enough to take them anywhere and everywhere you want to go.





TRUE BLEND

WOODCORE

TrueBlend is a woodcore technology that delivers a specifically designed flex in every size of every model. By intentionally positioning different density woods at varying lengths throughout the core, TrueBlend woodcores provide the appropriate amount of stiffness underfoot and softness towards the tip and tail. The result is a very smooth and balanced ski that is meticulously engineered to deliver a feeling of confidence and control.

THUNDERBIRD PHOENIX

**11 X 3
BEECH / POPLAR**



BONAFIDE / BRAHMA BLACK PEARL

**7 X 3
BEECH / POPLAR**



HUSTLE

**8 X 3 X 5
BEECH / POPLAR / PAULOWNIA**



ZERO G LT 80

**2 X 6
POPLAR / PAULOWNIA**



ALL MOUNTAIN FREERIDE



COCHISE
BONAFIDE
BRAHMA



BLACK
PEARL



*Brahma 88 TrueBlend Woodcore installation.
Mittersill, Austria*



COCHISE 106
8A225000001

Lengths: 177, 185, 192 cm
Sidecut: 137.5-106-124.5 mm
Radius: 22.5, 24, 26 m
Rocker: Rocker-Camber-Rocker
Weight: 4640 g/pr @ 185
Construction: Sandwich Compound Sidewall (Ti); Flipcore Technology

BONAFIDE 97
8A225100001

Lengths: 165, 171, 177, 183, 189 cm
Sidecut: 136.5-97-118.5 mm (177)
Radius: 15, 16, 17, 18.5, 20 m
Rocker: Rocker-Camber-Rocker
Weight: 4400 g/pr @ 177
Construction: Sandwich Compound Sidewall, Double Ti, TrueBlend All-mountain Flipcore

BRAHMA 88
8A225200001

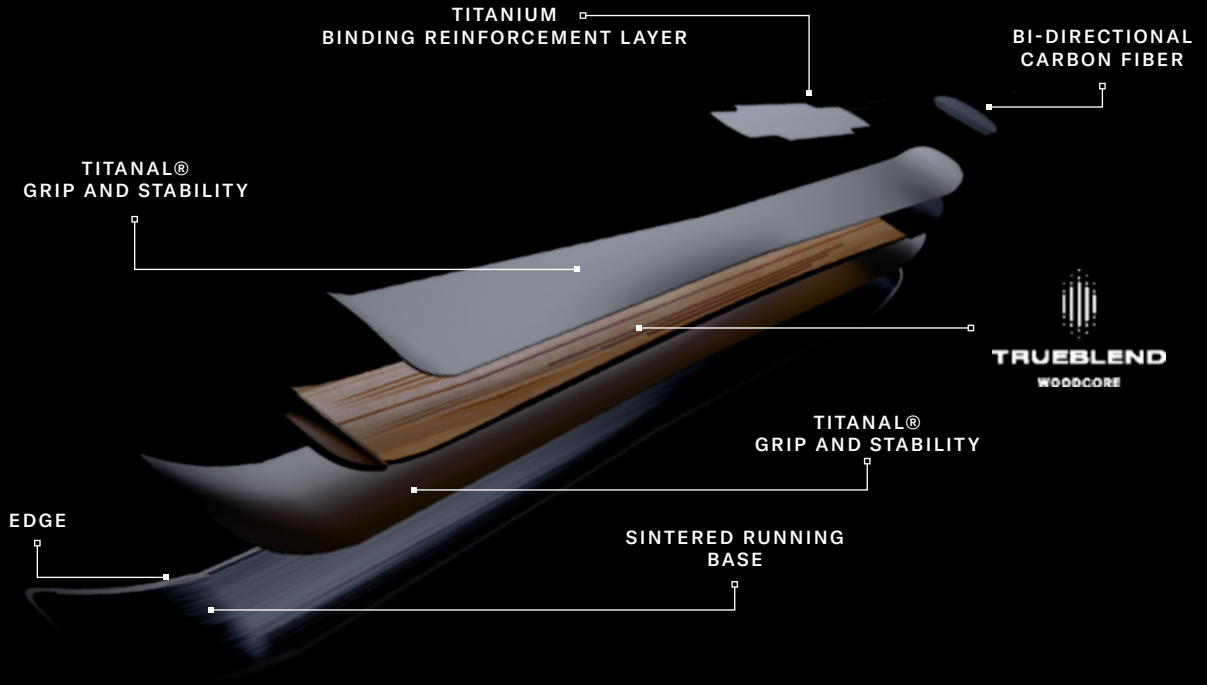
Lengths: 165, 171, 177, 183, 189 cm
Sidecut: 128-88-110 mm (177)
Radius: 14, 15, 16, 17.5, 19 m
Rocker: Rocker-Camber-Rocker
Weight: 4200 g/pr @ 177
Construction: Sandwich Compound Sidewall, Double Ti, TrueBlend All-mountain Flipcore

BRAHMA 82
8A225400001

Lengths: 166, 173, 180, 187 cm
Sidecut: 121-82-105 mm (180)
Radius: 13.5, 15, 16.5, 18.5 m
Rocker: Rocker-Camber-Rocker
Weight: 3980 g/pr @ 180
Construction: Sandwich Compound Sidewall, Double Ti, TrueBlend All-mountain Flipcore

TRUEBLEND CARBON FLIPCORE CONSTRUCTION

The Flipcore Construction process stands for quality, high standard and craftsmanship. It's what has made Blizzard Skis famous around the world and is what gives them their unique behavior.



SPECIFICALLY DESIGNED MOLDS



SPECIFICALLY DESIGNED SIDECUT

- Maximum Versatility



SPECIFICALLY DESIGNED ROCKER/CAMBER PROFILE

- Performance & Control



BLACK PEARL 97
8A227400001

Lengths: 153, 159, 165, 171, 177 cm
Sidecut: 136.5-97-118.5 mm
Radius: 13, 14, 15, 16, 17 m
Rocker: Rocker-Camber-Rocker
Weight: 3800 g/pr @ 165
Construction: Sandwich Compound Sidewall (Carbon) TrueBlend Flipcore W.S.D.



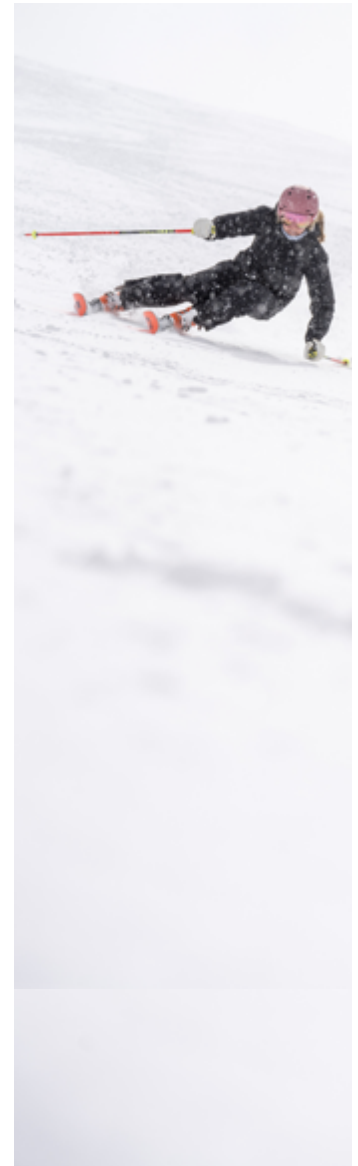
BLACK PEARL 88
8A227500001

Lengths: 147, 153, 159, 165, 171, 177 cm
Sidecut: 128-88-110 mm
Radius: 11, 12, 13, 14, 15, 16 m
Rocker: Rocker-Camber-Rocker
Weight: 3480 g/pr @ 165
Construction: Sandwich Compound Sidewall (Carbon) TrueBlend Flipcore W.S.D.



BLACK PEARL 82
8A227700002

Lengths: 145, 152, 159, 166, 173 cm
Sidecut: 121-82-105 mm
Radius: 11.5, 12.5, 13.5, 15 m
Rocker: Rocker-Camber-Rocker
Weight: 2980 g/pr @ 166
Construction: Sandwich Compound Sidewall (Carbon) TrueBlend Flipcore W.S.D.

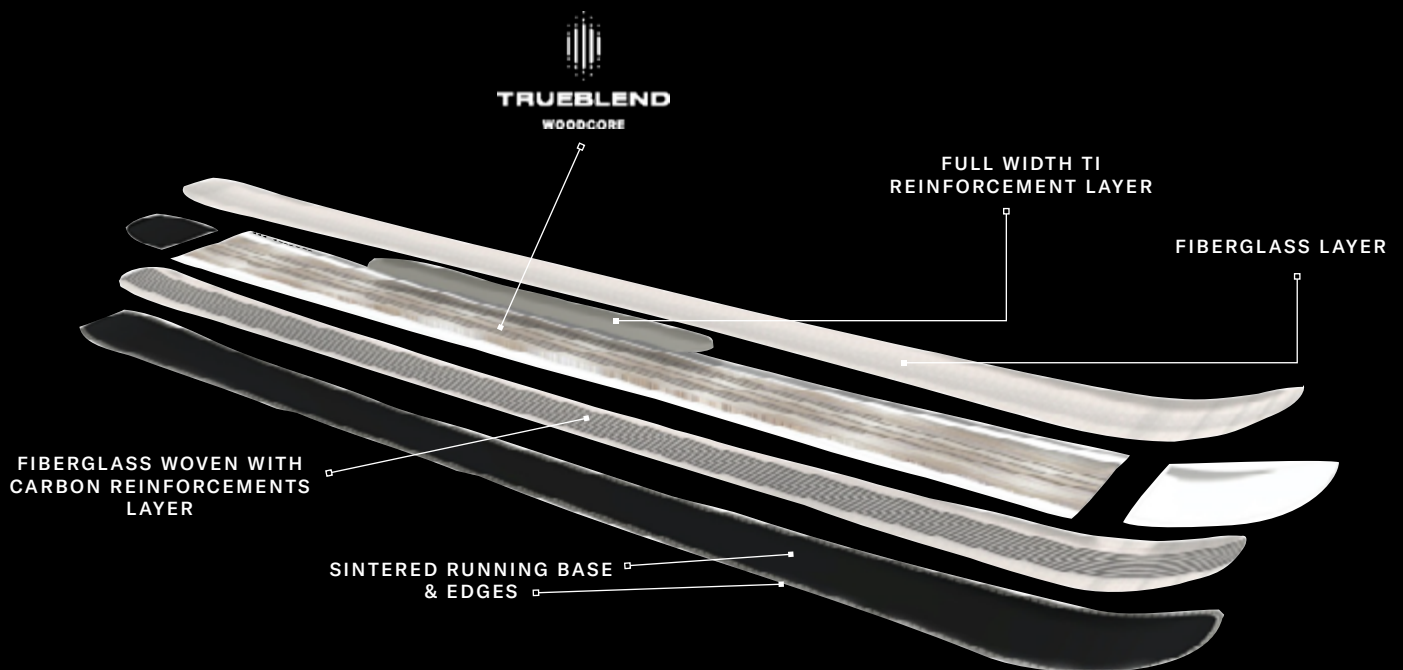


TRUEBLEND FLIPCORE W.S.D. CONSTRUCTION

Flipcore W.S.D. (Woman Specific Design) with the TrueBlend woodcore offers the perfect blend of the right weight and performance.

W.S.D. CONSTRUCTION

Specifically designed for women, the Black Pearl collection uses the TrueBlend woodcore with a uniquely shaped layer of titanal for edge grip and stability.



To the women who go skiing as often as they can, who schedule long lunch breaks for mid-day hot laps, who get the entire family to the ski hill on the weekends, who find solace in snow-covered trees or perfect corduroy, the Black Pearls are your anthem. Long one of the bestselling skis, we know women trust the Black Pearls to cut through chalk, carve gorgeous arcs and unlock challenging terrain. After years of proven success and an intensive development process that relied on a core group of female athletes and advisors, the Black Pearls are as versatile, inspiring and easy to ski as they've ever been, fine-tuned to empower all women on the mountain—novices to experts and everyone in between.



FREERIDE



RUSTLER



SHEEVA



SPUR
8A006000001

Lengths: 159, 169, 179, 189 cm
Sidicut: 147-127-136 mm (179 cm)
 147-124-136 mm (169 cm)
Rocker: Rocker-Camber-Rocker
Weight: 4100 g/pr @ 179
Construction: Sandwich Compound
 Sidewall (Ti) Carbon Flipcore
 Technology



RUSTLER 11
8A226100001

Lengths: 164, 172, 180, 188, 192 cm
Sidicut: 139-112-129 mm (180)
 142-114-132 mm (188)
 145-116-135 mm (192)
Radius: 16, 17.5, 19, 21, 23 m
Rocker: Tip-Tail Rocker
Weight: 4180 g/pr @ 188
Construction: Sandwich Compound
 Sidewall, Carbon Flipcore D.R.T.
 (Dynamic Release Technology)



RUSTLER 10
8A226200001

Lengths: 164, 172, 180, 188 cm
Sidicut: 133-102-122.5 mm (180)
 135-104-124 mm (188)
Radius: 14.5, 16, 17.5, 19 m
Rocker: Tip-Tail Rocker
Weight: 4040 g/pr @ 180
Construction: Sandwich Compound
 Sidewall, Carbon Flipcore D.R.T.
 (Dynamic Release Technology)



RUSTLER 9
8A226300001

Lengths: 164, 172, 180, 188 cm
Sidicut: 127.5-94-117 mm (180 cm)
Radius: 14, 15.5, 17, 18.5 m
Rocker: Tip-Tail Rocker
Weight: 3920 g/pr @ 180
Construction: Sandwich Compound
 Sidewall, Carbon Flipcore D.R.T.
 (Dynamic Release Technology)



SHEEVA 11
8A227000001

Lengths: 156, 164, 172, 180 cm
Sidecut: 139-112-129 mm
Radius: 14.5, 16, 17.5, 19 m
Rocker: Tip-Tail Rocker
Weight: 3700 g/pr @ 172
Construction: Sandwich Compound Sidewall, Carbon Flipcore D.R.T. (Dynamic Release Technology)



SHEEVA 10
8A227100001

Lengths: 156, 164, 172, 180 cm
Sidecut: 131.5-102-121.5 mm
Radius: 13, 14.5, 16, 17.5 m
Rocker: Rocker-Camber-Rocker
Weight: 3520 g/pr @ 164
Construction: Sandwich Compound Sidewall, Carbon Flipcore D.R.T. (Dynamic Release Technology)



SHEEVA 9
8A227200001

Lengths: 148, 157, 164, 172 cm
Sidecut: 124-92-114 mm
Radius: 12.5, 13, 14, 15.5 m
Rocker: Tip-Tail Rocker
Weight: 3580 g/pr @ 164
Construction: Sandwich Compound Sidewall, Carbon Flipcore D.R.T. (Dynamic Release Technology)





TOURING



ZERO G



ZERO G 105
8A226800001

Lengths: 164, 172, 180, 188 cm
Sidecut: 133-105-120 mm
Radius: 18, 20, 23, 24 m
Rocker: Tip-Tail Rocker
Construction: Sandwich Compound Sidewall (Carbon) Carbon Drive Technology 3.0

ZERO G 095
8A228000001

Lengths: 157, 164, 171, 178, 185 cm
Sidecut: 127-94-111 mm
Radius: x, 19.5, 22, 23, 24 m
Rocker: Tip-Tail Rocker
Construction: Sandwich Compound Sidewall (Carbon) Carbon Drive Technology 3.0

ZERO G 095
8A228100001

Lengths: 157, 164, 171, 178, 185 cm
Sidecut: 127-94-111 mm
Radius: x, 19.5, 22, 23, 24 m
Rocker: Tip-Tail Rocker
Construction: Sandwich Compound Sidewall (Carbon) Carbon Drive Technology 3.0

ZERO G 085
8A228200001

Lengths: 150, 157, 164, 171, 178 cm
Sidecut: 115-85-99 mm
Radius: 17, 17.5, 19.5, 21.5, 22 m
Rocker: Tip-Tail Rocker
Construction: Sandwich Compound Sidewall (Carbon) Carbon Drive Technology 3.0

ZERO G 085
8A228300001

Lengths: 150, 157, 164, 171, 178 cm
Sidecut: 117-85-101 mm
Radius: 17, 17.5, 19.5, 21.5, 22 m
Rocker: Tip-Tail Rocker
Construction: Sandwich Compound Sidewall (Carbon) Carbon Drive Technology 3.0

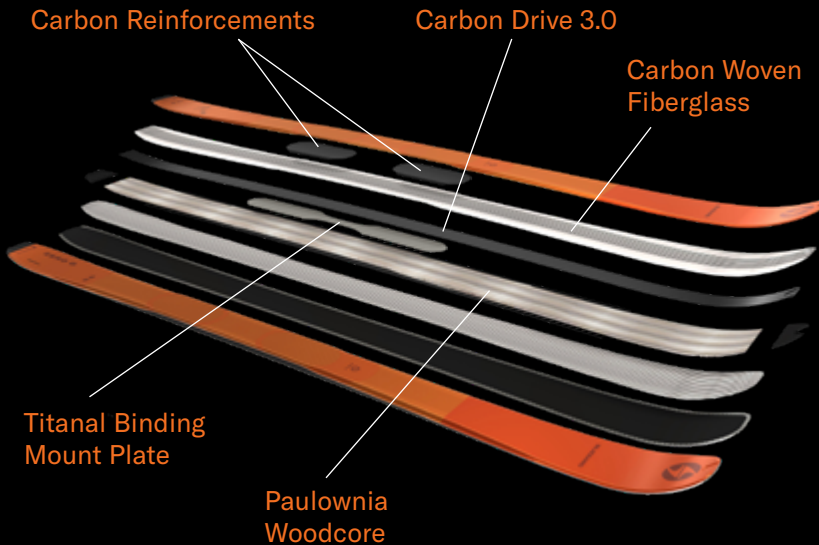
ZERO G TECHNOLOGIES

Building on our tried-and-true technology with Carbon Drive 3.0, our Zero G skis deliver even better downhill stability and confidence in an industry leading lightweight package.

Keep up on the down with Blizzard Zero G.

CARBON DRIVE 3.0

The integration of a 3D uni-directional carbon fiber frame with an ultra-lightweight paulownia woodcore construction allows us to reduce the weight of the ski while providing structure for performance. With Carbon Drive 3.0, the carbon frame now wraps the full length of the ski, guaranteeing optimal flex and torsional rigidity while ensuring smooth edge to edge transitions. The result is a level of stability, edge grip and control unprecedented in the world of ski mountaineering.



ZERO G CONSTRUCTION

The best downhill performance with the lightest weight.

+ LONG CONTACT SURFACE

Improves stability on all types of terrain.

+ LONGER RADIUS SIDECUT

More forgiving and less catchy, especially in variable snow.

+ LIGHTWEIGHT

3D shape and new Carbon Fiber inlayed glass fiberlayer.

CARBON REINFORCEMENT

Two edge to edge layers of bi-directional carbon fiber are positioned in the binding mounting areas to improve binding retention and torsional strength.

WEIGHT CHART (PER PAIR)

		150	157	164	171	172	178	180	185	188
ZERO G 105	For the skier who doesn't follow tracks, they create their own.	-	-	2620 (+/-50 g)	-	2900 (+/-50 g)	-	3060 (+/-50 g)	-	3300 (+/-50 g)
ZERO G 95	For the skier who loves to go up as much as they love to go down.	-	-	2250 (+50 g)	2340 (+50 g)	-	2500 (+50 g)	-	2620 (+50 g)	-
ZERO G 85	Individuals looking for the lightest alpine touring ski over 80mm in the waist.	1820 (+50 g)	1890 (+50 g)	2050 (+50 g)	2200 (+50 g)	-	2360 (+50 g)	-	-	-

POMOCA TECH SKINS



+ **VELVET:** Unique climb formula 70% mohair, 30% nylon (Best in gliding+waterproof treatment, unique as OEM Velvet)

+ **MEMBRANE:** Safer skin light (best in lightness and waterproof)

+ **GLIDE TREATMENT:** Thanks to the exclusive glide process, ski tourers get extra glide with less effort. The skins glide and resist moisture more effectively. Skins with glide offer an effective process for the entire life of the skin, and unique anti-glopping performance.

+ **GLUE:** Pomoca glue formula (best for handling, no paper needed)

+ **FRONT FIXATION:** Specific front fixation piece with Blizzard logo, compatible with all skis.

+ **BACK FIXATION:** Improved elastic back fixation (better for handling)

+ **GLIDE:** 213 kcal/h

+ **GRIP:** 52 g/cm²

+ **WEIGHT:** 1150 g/m²

FRONTSIDE



THUNDERBIRD



PHOENIX



TRUEBLEND
WOODCORE



R15 WB
+ TPX 12
8A1035A1001

Lengths: 158, 166, 174, 182 cm
Sidecut: 126-76-107 mm
Radius: 13, 14.5, 15, 17 m
Binding: TPX 12 with FDT Race Plate
2mm Rocker: Tip to Tail Camber
Construction: TrueBlend On-Piste Woodcore, Active Carbon Armor, Double Ti, Duramax Construction

TRUEBLEND
WOODCORE



R13
+ TPX 12
8A1036AL001

Lengths: 155, 160, 165, 170 cm
Sidecut: 121-68-105 mm
Radius: 11.5, 12.5, 13.0, 13.5 m
Binding: TPX 12 with FDT Race Plate
Full Camber
Construction: TrueBlend On-Piste Woodcore, Active Carbon Armor, Double Ti, Duramax Construction



SPORT TI
+ TPX 12
8A1040AH001

Lengths: 145, 150, 155, 160, 165, 170, 175 cm

Sidecut: 125-76-105mm

Radius: 10.5, 11, 11.5, 12, 13, 14, 15 m

Binding: TPX 12

Full Camber

Construction: TrueBlend On-Piste Woodcore, Sandwich Compound Sidewall; Ti



SPORT CA
+ TPC 11
8A1042BD001

Lengths: 145, 150, 155, 160, 165, 170, 175 cm

Sidecut: 125-76-105mm

Radius: 10.5, 11, 11.5, 12, 13, 14, 15 m

Binding: TPC 11

2mm Rocker: Tip to Tail Camber
Construction: TrueBlend On-Piste Woodcore, Sandwich Compound Sidewall



SP 7.7
+ TPC 11
8A1117BC001

Lengths: 139, 146, 153, 160, 167, 174 cm

Sidecut: 123-77-105 mm

Radius: 10, 11, 12, 13, 14, 15 m

Binding: TPC 11

6mm Rocker: Tip to Tail Camber

Construction: Sandwich Composite Sidewall; Wood



SP 7.2
+ TLT 10
8A1118DA001

Lengths: 139, 146, 153, 160, 167, 174 cm

Sidecut: 121-72-104 mm

Radius: 10, 11, 12, 13, 14, 15 m

Binding: TLT 10

6mm Rocker: Tip to Tail Camber

Construction: Sandwich Composite Sidewall; Wood

TRUEBLEND
WOODCORE



R14 PRO
+TPX 12 W
8A1045AM001

Lengths: 155, 160, 165, 170, 175 cm
Sidecut: 121-70-102 mm
Radius: 11.5, 12.5, 14, 14.5, 15 m
Binding: TPX 12
Din: 4-12
Rocker: Full Camber
Construction: TrueBlend On-Piste Woodcore, Active Carbon Armor, Double Ti, Duramax Construction

TRUEBLEND
WOODCORE



R13 CA
+TPC 11 W
8A2249BE001

Lengths: 145, 150, 155, 160, 165, 170 cm
Sidecut: 125-76-105 mm
Radius: 10.5, 11, 11.5, 12, 13, 14 m
Binding: TPC 11 W
Din: 3-11
Rocker: 3 mm Rocker
Construction: TrueBlend On-Piste Woodcore, Light Construction, Sandwich Compound Sidewall



7.7
+TLT 10 W
8A2311DF001

Lengths: 146, 153, 160, 167 cm
Sidecut: 121-77-103 mm
Radius: 11, 12, 13, 14 m
Binding: TLT 10 W
Din: 3-10
Rocker: 6 mm Rocker
Construction: Composite Sidewall



7.2
+TLT 10 W
8A2310DF001

Lengths: 146, 153, 160, 167 cm
Sidecut: 119-72-102 mm
Radius: 11, 12, 13, 14 m
Binding: TLT 10 W
Din: 3-10
Rocker: 6 mm Rocker
Construction: Composite Sidewall



WOMEN 2 WOMEN



PHOENIX

PHOENIX W.S.D. DESIGN

The Phoenix collection combines the TrueBlend Piste Woodcore with a Women's Specific Design to address the need for performance and stability with lightness and playfulness. These molds address the balance point of female skiers for a better on-snow experience.



LIGHT CONSTRUCTION WITH TRUEBLEND WOODCORE

Particular attention has been made to the choice of the materials, glue and 3D shaping in order to have the lightest construction combined with swing weight optimization.



SHAPE

The molds feature a dedicated women's specific side-cut.

- + BMP: The binding mounting point is forward to address the females center of gravity
- + With a forward BMP the full sidecut is adjusted forward to fully access the sweet spot of the ski
- + Effortless radius: 10 - 14 m
- + Narrow but longer tail offers support without catching allowing easy release at the end of the turn.



ROCKER PROFILE

- + A shorter, 3mm rocker profile results in 10% more ski contact with the snow
- + The result is more stability, precision and control in a confidence inspiring ride



FRONTSIDE HIGH PERFORMANCE



**FIREBIRD WRC WC-PISTON
(flat+plate)**
8A222000001

Lengths: 170, 175, 180, 185 cm

Sidecut: 115.5-68-98.5 mm

Radius: 16.5, 17.5, 18.5, 19.5 m

Plate: Piston Plate

Full Camber

Construction: Sandwich Compound

Sidewall (Ti) Racing Construction

C-Armor + C-Spine Core



FIREBIRD HRC WC-PISTON
(flat+plate)
8A222100001

Lengths: 158, 166, 174, 182 cm
Sidecut: 126-76-107 mm
Radius: 13-14,5-15-17 m
Plate: Piston Plate
Full Camber
Construction: Sandwich Compound
Sidewall (Ti) Racing Construction
C-Armor + C-Spine Core



FIREBIRD WRC
+ XCELL14 DEMO
8A2223FB001

Lengths: 170, 175, 180, 185 cm
Sidecut: 115.5-68-98.5 mm
Radius: 16.5, 17.5, 18.5, 19.5 m
Plate: FDT Race Plate PRO
Binding: XCELL 14
Din: 4-14
Full Camber
Construction: Sandwich Compound
Sidewall (Ti) Racing Construction
C-Armor + C-Spine Core



FIREBIRD HRC
+ XCELL14 DEMO
8A2224FB001

Lengths: 158, 166, 174, 182 cm
Sidecut: 126-76-107 mm
Radius: 13, 14.5, 15, 17 m
Plate: FDT Race Plate PRO
Binding: XCELL 14
Din: 4-14
Full Camber
Construction: Sandwich Compound
Sidewall (Ti) Racing Construction
C-Armor + C-Spine Core



FIREBIRD SRC
+ XCELL14 DEMO
8A2225FB001

Lengths: 155, 160, 165, 170 cm
Sidecut: 121-68-105 mm
Radius: 11, 12, 12.5, 13.5 m
Plate: FDT Race Plate PRO
Binding: XCELL 14
Din: 4-14
Full Camber
Construction: Sandwich Compound
Sidewall (Ti) Racing Construction
C-Armor + C-Spine Core

FREERIDE TEAM



COCHISE TEAM

8A225500001

Lengths: 140, 150, 160 cm

Sidecut: 128-97-115 mm

Radius: 13.5, 15, 16.5 m

Rocker: Rocker-Camber-Rocker

Construction: Sandwich
Compound Partial Sidewall (QQ)
Flipcore Technology

RUSTLER TEAM

8A226400001

Lengths: 140, 148, 156, 164 cm

Sidecut: 123-92-113 mm

Radius: 1.5, 12.5, 13 m

Rocker: Rocker-Camber-Rocker

Construction: Sandwich
Compound Partial Sidewall (QQ)
Dynamic Release Technology

SHEEVA TEAM

8A227300001

Lengths: 140, 148, 156 cm

Sidecut: 118.5-90-108.5 mm

Radius: 11.5, 12.5, 13 m

Rocker: Rocker-Camber-Rocker

Construction: Sandwich
Compound Partial Sidewall.
Dynamic Release Technology



JUNIOR



**RUSTLER TWIN JR
+FDT JR 7 WB**
8A0100MG001

**SHEEVA TWIN JR
+FDT JR 7 WB**
8A0102MG001

**BRAHMA JR L (110-140)
+FDT JR 7**
8A0096ME001

**PEARL JR (110-140)
+FDT JR 7**
8A2232ME001

**FIREBIRD COMP. JR
+ FDT JR 7**
8A0016ME001

**RUSTLER TWIN JR
+FDT JR 4.5 WB**
8A0101MH001

**SHEEVA TWIN JR
+FDT JR 4.5 WB**
8A0103MH001

**BRAHMA JR (100-140)
+FDT JR 4.5**
8A0095MF001

**PEARL JR (100-140)
+FDT JR 4.5**
8A2231MF001

**FIREBIRD COMP. JR
+ FDT JR 4.5**
8A0017MF001

**BRAHMA JR (70-90)
+FDT JR 4.5**
8A0094MF001

**PEARL JR (70-90)
+FDT JR 4.5**
8A2230MF001

Lengths:
108, 118, 128, 138, 148 cm
Sidecut:
109-76-99 mm (148 cm)
Radius:
8, 9, 11, 12, 14 m
Plate:
FDT JR RTL S (108-128 cm)
FDT JR RTL L (138-148 cm)
Binding:
FDT JR 7 WB (8A0100MG001)
FDT JR 4.5 WB (8A0101MH001)
Din:
2-7 (8A0100MG001)
0.5-4.5 (8A0101MH001)
Construction:
Composite Sidewall

Lengths:
108, 118, 128, 138, 148 cm
Sidecut:
109-76-99 mm (148 cm)
Radius:
8, 9, 11, 12, 14 m
Plate:
FDT JR RTL S (108-128 cm)
FDT JR RTL L (138-148 cm)
Binding:
FDT JR 7 WB (8A0102MG001)
FDT JR 4.5 WB (8A0103MH001)
Din:
2-7 (8A0102MG001)
0.5-4.5 (8A0103MH001)
Construction:
Composite Sidewall

Lengths:
110, 120, 130, 140 cm (8A0096ME001)
100, 110, 120, 130, 140 cm
(8A0095MF001)
70, 80, 90 cm (8A0094MF001)
Sidecut:
106-67-95 mm (140cm)
102-67-89 mm (90cm)
Radius:
7, 8, 10, 12 m (8A0096ME001)
6, 7, 8, 10, 12 m (8A0095MF001)
3, 4, 5 m (8A0094MF001)
Plate:
FDT JR RTL PLATE S (70-110 cm)
FDT JR RTL PLATE L (120-140 cm)
Binding:
FDT JR 7 (8A0096ME001)
FDT JR 4.5 (8A0095MF001 -
8A0094MF001)
Din:
2-7 (8A0096ME001)
0.5-4.5 (8A0095MF001 -
8A0094MF001)
Construction: Composite

Lengths:
110, 120, 130, 140 cm (8A0099ME001)
100, 110, 120, 130, 140 cm
(8A0098MF001)
70, 80, 90 cm (8A0097MF001)
Sidecut:
106-67-95 mm (140 cm)
102-67-89 mm (90 cm)
Radius:
7, 8, 10, 12 m (8A0099ME001)
6, 7, 8, 10, 12 m (8A0098MF001)
3, 4, 5 m (8A0097MF001)
Plate:
FDT JR RTL PLATE S (70-110 cm)
FDT JR RTL PLATE L (120-140 cm)
Binding:
FDT JR 7 (8A0099ME001)
FDT JR 4.5 (8A0098MF001 -
8A0097MF001)
Din:
2-7 (8A0099ME001)
0.5-4.5 (8A0098MF001 -
8A0097MF001)
Construction: Composite

Lengths:
100, 110, 120, 130, 140, 150 cm
Sidecut:
118-70-98 mm (150 cm)
Radius:
7, 8, 9, 10, 11, 12 m
Binding:
FDT JR 7 (8A0016ME001)
FDT JR 4.5 (8A0017MF001)
Din:
2-7 (8A0016ME001)
0.5-4.5 (8A0017MF001)
Full Camber
Construction:
Sandwich Compound Partial
Sidewall, Racing Construction

RENTAL



BRAHMA 88 SP
+ TCX11 DEMO-90
8A2286II001

Lengths: 147, 153, 159, 165, 171, 177, 183 cm
Sidecut: 128-88-110
Radius: 11, 12, 13, 14, 15.5, 17, 19 m
Plate: FDT FREERIDE Plate
Binding: TCX11 DEMO-90
Din: 3-11
Rocker: Rocker-Camber-Rocker
Construction: Sandwich Compound Sidewall (Carbon); TrueBlend Flipcore Technology



BLACK PEARL 88 SP
+ TCX11 DEMO-90
8A2288II001

Lengths: 147, 153, 159, 165, 171, 177 cm
Sidecut: 128-88-110
Radius: 11, 12, 13, 14, 15, 16 m
Plate: FDT FREERIDE Plate
Binding: TCX11 DEMO-90
Din: 3-11
Rocker: Rocker-Camber-Rocker
Construction: Sandwich Compound Sidewall (Carbon); TrueBlend Flipcore W.S.D. Technology



BRAHMA 82 SP
+ TPC10 DEMO
8A2285BH001

Lengths: 145, 152, 159, 166, 173, 180 cm
Sidecut: 121-82-105
Radius: 11.5, 12.5, 13.5, 15, 16.5 m
Plate: FDT FREERIDE Plate
Binding: TPC10 DEMO
Din: 3-10
Rocker: Rocker-Camber-Rocker
Construction: Sandwich Compound Sidewall (Carbon) Carbon Flipcore Technology



BLACK PEARL 82 SP
+ TPC10 DEMO
8A2287BH001

Lengths: 145, 152, 159, 166, 173 cm
Sidecut: 121-82-105
Radius: 11.5, 12.5, 13.5, 15 m
Plate: FDT FREERIDE Plate
Binding: TPC10 DEMO
Din: 3-10
Rocker: Rocker-Camber-Rocker
Construction: Sandwich Compound Sidewall (Carbon) Carbon Flipcore Technology



**XCR
+ TLT10 DEMO**
8A0117DA001

Lengths: 139, 146, 153, 160, 167, 174 cm
Sidecut: 123-77-105 mm
Radius: 10; 11, 12, 13, 14, 15 m
Plate: FDT RTL Plate
Binding: TLT10 DEMO
Din: 3 -10
Rocker: 6mm Rocker
Construction: Composite Sidewall
 Wood RTL Tech Technology



**ELEVATE 7.7
+ TLT10 DEMO W**
8A9318DG001

Lengths: 139, 146, 153, 160, 167 cm
Sidecut: 121-77-103 mm
Radius: 10; 11, 12, 13, 14 m
Plate: FDT RTL Plate
Binding: TLT10 DEMO W
Din: 3-10
Rocker: 6mm Rocker
Construction: Composite Sidewall
 Wood RTL Tech Technology

RENTAL-TEC

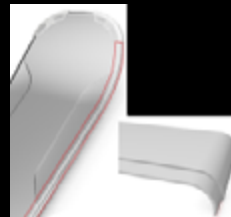
The Blizzard rental collection is founded on a specific set-up of features implemented on our products in order to guarantee the maximum level of durability and adjustability: the RENTAL-TEC construction.



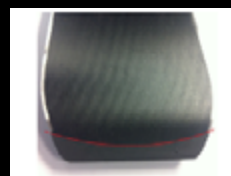
**TOP FOIL 0,7MM
STRUCTURED (NOPPE)**
 The top foil is 0,7mm thick (50% thicker than the standard) for maximum impact and scratch resistance



OVERSIZE STEELEDGES:
 2,0 X 2,2 mm
 For maximum durability



TOP EDGE ROUND CORNER
 Better impact and scratch resistance



SINTERED BASE 1,4MM
 For a longer life



**FULL COVER TIP PROTECTOR
& STABLE TAIL PROTECTOR**
 Better impact and scratch resistance